

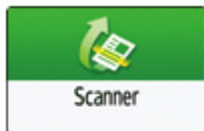
# Procedure for Performing Send to Folder

January 9, 2020

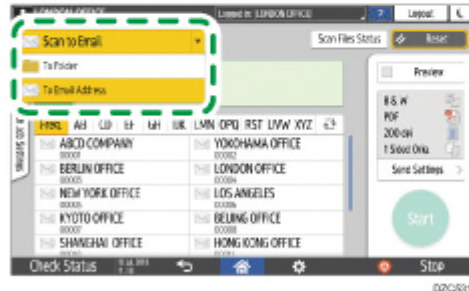
**RICOH**  
imagine. change.

# Send to Folder Procedure

- 1 Press [Scanner] on the Home screen.



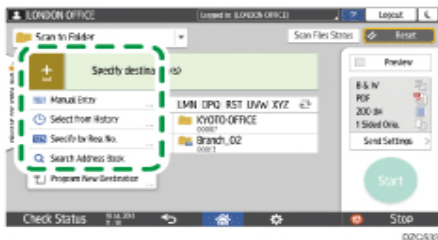
- 2 Select [To Folder] on the scanner screen.



- 3 Place the original on the scanner.

# Send to Folder Procedure

- 4 Press **[Send Settings]** and configure the scan settings according to the purpose of the scanned data.
- 5 Press **+**, select **[Search Address Book]** or **[Specify by Reg. No.]** and then specify the shared folder that is registered in the address book.



- To enter the information manually, press **+**, and select **[Manual Entry]**. Select **SMB** as the protocol and enter the required information.
- To specify the destination again, press **2**.



- 6 Press **[Start]**.

**RICOH**  
imagine. change.